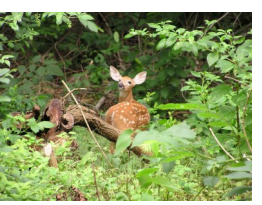


# Laurel Creek Country Club



**Turf Management  
Summer Internship Program**



# About Laurel Creek



- ◆ Regulation 18 Hole Golf Course, 6917 yards, Par 71.
- ◆ Located 20 miles outside of Philadelphia.
- ◆ Arnold Palmer Signature Design golf course.
- ◆ Construction began in 1988 and was completed in 1990.
- ◆ Contains 40 acres of protected wetlands.
- ◆ Certified Audubon Cooperative Sanctuary.



# Our Mission Statement



Laurel Creek Country Club is characterized by an active membership that shares a unique social experience built upon **outstanding golf**, a dynamic family environment and the superior service and amenities of a premier country club.

Our R.E.C.I.P.E. for Success:

**R**elationships

**E**xcellence

**C**ommunication

**I**mprovement

**P**assionate

**E**mpowerment

# What is Outstanding Golf?



Exceed the expectations of every member, every time.

Attention to detail.

Continuous improvement.

Rewarding and challenging golf experience.

Maintain design intent.

Cultivate an identity.



# From the Superintendent



Director of Golf Course Operations

**John Slade**

I sincerely appreciate your interest in Laurel Creek Country Club. Your internship experience here will be diverse and well-rounded, providing you hands-on experience that can help you in the future, regardless of your career path. Turfgrass management requires a wide-ranging skill set, including knowledge of soils, environmental best practices, water and pest management. At Laurel Creek, you will be surrounded by a seasoned, knowledgeable staff, who can take you beyond the “how” of turfgrass management, and help you to better understand the “why” of what we do. As a Club, Laurel Creek is always seeking to improve the golf course, both through the continued use of sound fundamental agronomic practices, as well as the implementation of a Master Plan. We look forward to sharing this experience with you—your success is our priority.

Regards,

John Slade



A team member  
topdressing fine  
fescue.



A busy morning with  
team members  
mowing greens and  
raking bunkers.



Our summer aeration  
procedure.

# Program Goals



- ◆ Introduce candidates to the daily operation of a premier golf course
- ◆ Instruct candidates in the best management practices for the growth and development of a superior playing surface
- ◆ Apply the Principles of Environmental and Plant Science in the context of Turfgrass Management
- ◆ Build the foundations for the pursuit of a career in turf management





# What You Will Learn



Interns will assist in all aspects of golf course management, including but not limited to:

- ◆ Hand watering of all turf areas
- ◆ Mowing of all turf areas
- ◆ Regular bunker repair and maintenance
- ◆ Golf course set-up
- ◆ Implementation of cultural practices
- ◆ Fertilizer and plant protectant calibration and application
- ◆ Irrigation troubleshooting and maintenance
- ◆ Equipment operation
- ◆ Small crew leadership opportunities
- ◆ Hands on experience with Laurel Creek Equipment Manager, reviewing major aspects of equipment and reel maintenance





## Integrated Pest Management

Understand the elements of a state of the art IPM program.

## Water Conservation

Learn sustainable irrigation management practices.

# **Applications of Environmental Science In Golf Turf Management**

## Soil Ecology

Learn about the soil conditions and micro-organisms that contribute to the growth of a high quality playing surface.

## Conservation Programs

Become familiar with the requirements associated with the Audubon Cooperative Sanctuary Program for Golf Courses as well as other conservation programs.

## Technology

Introduction to the machines used in the turf management industry.

# Intern Expectations



- Be **ON TIME**
- Have a **POSITIVE ATTITUDE**, **BE MOTIVATED**, and **BE DEDICATED**
- **ASK** questions
- **TAKE NOTES**; keep a daily log of mowing, heights of cut, projects, fertilizer/spray applications, etc.
- Be a **TEAM PLAYER** and **LEAD BY EXAMPLE**
- Be **PROFESSIONAL** at all times
- **MAINTAIN** company uniforms in a neat and clean manner so that you will have a professional appearance at all times
- **COMMUNICATE**
- **BE COURTEOUS** to members and to the extent possible, try to stay clear of members
- Be a **HARD WORKER**
- **CELL PHONES** are to be used on **PERSONAL TIME ONLY** and **NEVER AROUND MEMBERS** on the golf course
- **BE SAFE!** Follow all safety rules, i.e., wear eye protection, wear ear plugs, drive safely, etc.

*Most importantly,*

**HAVE FUN!**

# Potential Candidates



- ◆ Must be 18 years of age to apply
- ◆ Must have an interest in Turf Management
- ◆ Currently pursuing a degree in Turf Science or a related field\*
- ◆ Recent high school graduate exploring career opportunities
- ◆ Current turf student looking for a summer internship
- ◆ Must possess a good work ethic, positive attitude and willingness to learn

**\*Any college student interested in a summer job is welcome to apply. Regardless of your major, you will be included in the Intern Program.**



# How to Apply



Email a personal statement and updated résumé to Luke Kringler at [lkringler@laurelcreek.org](mailto:lkringler@laurelcreek.org).

Your personal statement should introduce yourself and describe your interest in the program. Include any qualities that you believe will make you successful in this program.

After your personal statement and résumé are reviewed, an interview with Golf Course Superintendent, John Slade, will be arranged.



# A Day At Laurel Creek



**5:50 am:** Arrive at the maintenance building

**5:55 am:** Clock-in

**6:00 am:** Morning Meeting; Jobs will be assigned and important information will be communicated

**6:00 am-10:00 am:** Prepare the golf course for play

Examples of Morning Jobs:

Mowing of playing surfaces (Greens, Collars, Tees, Fairways)

Rake Bunkers

Trim Bunker Edges

Spray Applications

Practice Tee Clean-up and Repair

**10:00 am-1:45 pm:** Secondary Jobs

Examples of Secondary Jobs:

Hand Watering

Weeding

Trim Work

Divot Repair

**1:45 pm-2:00 pm:** Clean equipment and Clock-Out



**Given the early start time, Laurel Creek is proud to offer limited employee housing assistance for out-of-state candidates and candidates with commutes greater than 30 minutes.**



Laurel Creek Country Club

701 Centerton Road

Mt. Laurel, NJ 08054

Phone: (856) 234-7663

Laurel Creek Turf Care Blog

[laurelcreeksuper.blogspot.com](http://laurelcreeksuper.blogspot.com)

**For more information contact:**

Luke Kringler

[lkringler@laurelcreek.org](mailto:lkringler@laurelcreek.org)

Phone: (609) 668-8753